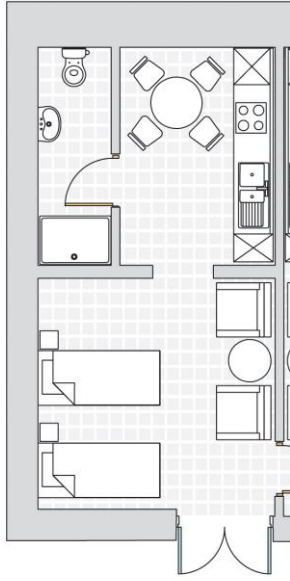


# PORTHERRIS SELF CATERING ACCOMMODATION



## APARTMENT 1 – VASE

Sleeps 2.

One single beds and one double. Sitting area with storage and tv/dvd.

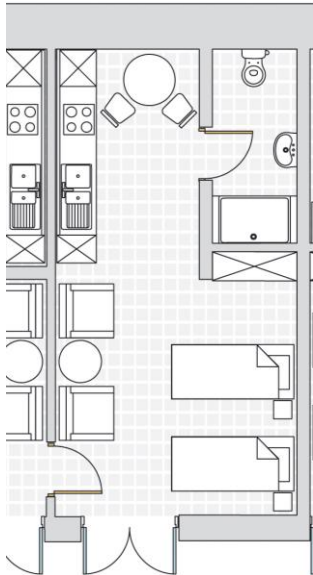
Separate kitchen with cooker, kettle, fridge/freezer, sink.

Bathroom with toilet, shower and sink

Lovely cosy apartment comfortably sleeping 2 people.

Seaward facing with outside seating and BBQ area.

Adjoining door (optional) with Apartment 2 to make it ideal for a couple with two children.



## APARTMENT 2 – RAGLAN

Sleeps 2.

Two single beds/sitting area with storage and tv/dvd.

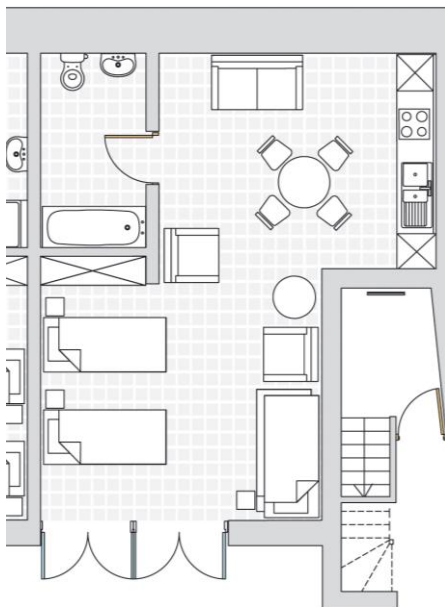
Separate kitchen with cooker, kettle, fridge/freezer, sink.

Bathroom with toilet, shower and sink

Lovely cosy apartment comfortably sleeping 2 people.

Seaward facing with outside seating and BBQ area.

Adjoining door (optional) with Apartment 1 to make it ideal for a couple with two children.



## APARTMENT 3 – PENWIN

Sleeps up to 4.

Two single beds and 1 adult bunk/sitting area with storage and tv/dvd

Separate kitchen with cooker, kettle, fridge/freezer, sink.

Bathroom with toilet, shower and sink.

Lovely cosy apartment sleeping up to 4 people.

Seaward facing with outside seating and BBQ area.

## **HOUSE APARTMENT – VOLNAY**

Sleeps up to 4.

One separate bedroom with two single beds. Storage for clothes.

Large living area with kitchen, dining area and sitting room with tv/dvd. Kitchen area has cooker, kettle, fridge/freezer, sink.

Sitting room has a sofa and 2 good quality foldaway beds.

Bathroom with toilet, shower and sink

Lovely spacious apartment sleeping up to 4 people.

Balcony with table and chairs



## **LOG CABIN**

The log cabin is situated in a lovely sheltered area with sea views, set back from the main house.

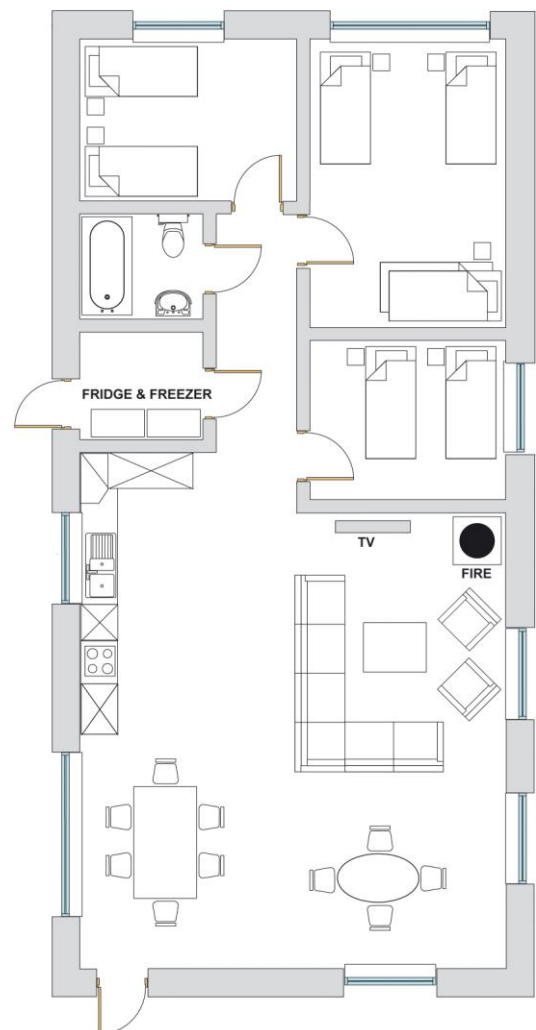
It is a lovely spacious accommodation with an alpine feel!!

There is an open plan sitting room, kitchen and dining room, equipped with all the essentials (cooker, fridge/freezer, microwave, tv etc).

There is a bathroom with toilet, sink and shower.

Also a separate room for coats and shoes etc.

There is a large outside seating area, perfect for evening BBQ's.



## **FURTHER INFORMATION**

- DVD lending library
- Book swap
- BBQ areas
- Breakfast vouchers

All accommodation INCLUDES parking AND unlimited shore diving (usually £5 a person plus £2 a car) whilst staying with us.

All rooms have linen provided and duvet and pillow, but NOT towels.

There is a welcome pack (tea, coffee, hot chocolate, sugar and milk) in all the accommodation which can be 'refuelled' FOC at the catering wagon at the beach. Food and drink to take away (burgers, bread, butter, jams, cereals, bacon, sausages etc) can be purchased from the catering van.

Dogs are allowed in the accommodation, but strictly NOT on beds or furniture. There are also kennels available on site which people are welcome to use FOC. Dogs must be kept on leads AT ALL times as Porthkerris is also a working farm with sheep, cattle, pigs and various free range chickens, peacocks and children.

Minimum stay for log cabin and all apartments is 2 nights.

Apartments and log cabin will be cleaned at the end of the stay, but ask that they are left as they were found. We ask that people respect others around them, especially in the log cabin when they may be sharing with people that they don't know. To avoid unnecessary conflict with fellow guests, we ask that they regularly clean up and tidy up after themselves.

There are wonderful walks around Porthkerris and one particularly nice walk to the local pub 'the five pilchards', which is only a 15 minute walk along the coastal footpath! It's a free house with lovely ales and food. There are also many other lovely pubs and restaurants a short drive away.

Porthkerris welcomes families and is ideal for children, with a lovely private beach, rock pools, fishing (our 10 year old sons have their own rod hire business!) and lots of animals to meet. There are loads of local activities for families: Flambards theme park, Roskilly's ice cream, Cornish Camels, Poldark mine, Sailaway St Anthony boat hire, Horse riding, Go carting, just to name a few....

AND FOR THE NEAR FUTURE.....

3 metre dive pool, for guests and training

Home made meals waiting for you when you arrive or during your stay when cooking is the last thing on your mind!

FOR MORE INFORMATION PLEASE CONTACT JO OR MIKE ON 01326 280 620

OR E MAIL [INFO@PORTHKERRIS.COM](mailto:INFO@PORTHKERRIS.COM)

WWW.PORTHKERRIS.COM